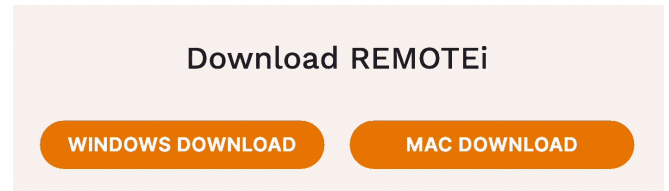


# Installing REMOTEi

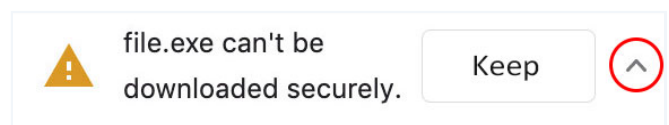
For Windows Users

## 1. Download

- Visit [http://uexams.com/download\\_remotei/](http://uexams.com/download_remotei/) and click the “Windows Download” button.



- If your browser prompts you at the bottom of your screen, choose “Keep” by selecting the arrow to open the menu if needed.



## 2. Install

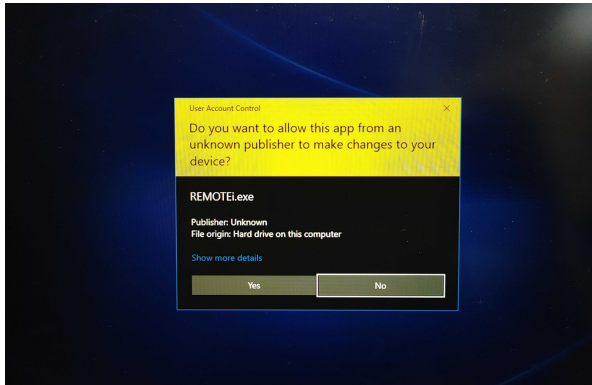
- Navigate to your Downloads folder and double-click the “REMOTEi Setup” file.
- If you receive a pop-up from Microsoft Defender, click the “More Info” link to reveal the “Run anyway” button. Click “Run anyway.”

# Installing REMOTEi

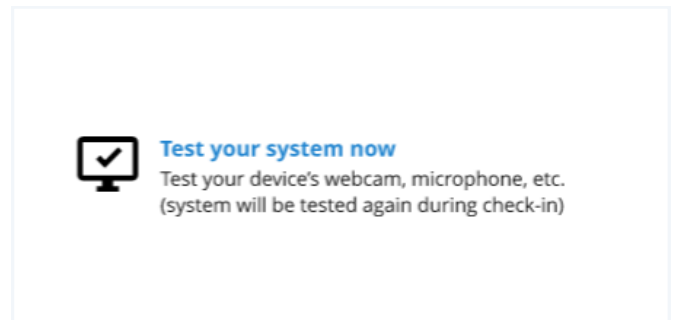
## For Windows Users

### 3. Pre-Test Your System

- Open the REMOTEi Application and click “Yes” if you get a pop-up asking permission to make changes and “Allow access” to communicate on private networks.



- Log into REMOTEi using your First Name, Last Name, and the unique ID that you received from your testing authority.
- Click “Test your system now” to run a preliminary check of your webcam and other devices



- You are all set to take your exam.